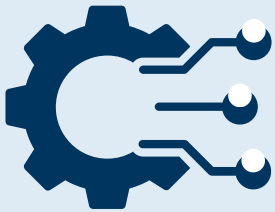


OKSHINE CONNECTION FEE ASSISTANCE ELIGIBLE PRODUCTS

Clinical Data Integration

Clinical data feed from the provider's electronic medical record system to MyHealth Access Network.



Common Message Connection Types:

ADT: Admission Discharge and Transfers

CCDA: Consolidated Clinical Document Architecture

MDM: Medical Documents

ORM: Orders

ORU: Observation Results

PPR: Patient Problem

RDE: Pharmacy/Treatment Encoded Order

VXU: Vaccination Record Update

One-Time Connection Fee: Covered by OKSHINE Connection Fee Assistance Award

Subscription Fee: Included in Base Participation

Single Sign-On

Single Sign-On seamlessly integrates access to the MyHealth Provider Portal with the user's EMR, allowing them to transition with a single click and view the same patient across platforms effortlessly.



One-Time Connection Fee: Covered by OKSHINE Connection Fee Assistance Award

Subscription Fee: Included in Base Participation

MyHealth E-Notification (A CoP Compliant Solution)

MyHealth E-Notification sends electronic notification to a patient's providers when patients are admitted, discharged or transferred (ADT) from the hospital, to assist Hospitals to comply with CMS Conditions of Participation (CoP) Electronic Notification requirement (CMS-9115-F).



One-Time Connection Fee: Covered by OKSHINE Connection Fee Assistance Award

Subscription Fee: Product Eligible for Analytics Allowance