

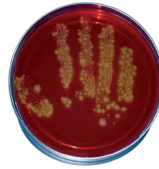
## ♥ How can I prevent HAI?

- Hand hygiene with soap and water
- Strict glove use\*
- Follow contact precautions
- Work from clean to dirty
- Change gloves between tasks
- Dedicated equipment if possible
  - Blood pressure cuff
  - Stethoscope
  - Thermometer
- Antibiotic stewardship
- If it hits the floor, it's trash

\*Recommended for CDiff



CDiff is ONLY transmitted by the fecal-oral route



CDiff from healthcare worker's gloved hand

- Scientists cultured the imprint of a health care worker's gloved hand after examining a patient infected with *Clostridium difficile*.
- The larger yellow colonies outlining the fingers are clusters of *Clostridium difficile*.
- The patient had showered an hour before the specimen was collected.<sup>4</sup>

♥ You are 5.2 times more likely to have bacteria on your hands if don't use gloves and only wash your hands.<sup>5</sup>

### Sources :

- <sup>1</sup> Guideline for Hand Hygiene in Health-Care Settings Recommendations of the Healthcare Infection Control Practices Advisory Committee and the HICPAC/SHEA/APIC/IDSA Hand Hygiene Task Force Prepared by John M. Boyce, M.D.1 Didier Pittet, M.D.2 1Hospital of Saint Raphael New Haven, Connecticut 2University of Geneva Geneva, Switzerland
- <sup>2</sup> CDC web site. Siegel JD, Rhinehart E, Jackson M, Chiarello L, and the Healthcare Infection Control Practices Advisory Committee, 2007 Guideline for Isolation Precautions: Preventing Transmission of Infectious Agents in Healthcare Settings
- <sup>3</sup> Boyce J Environmental contamination makes an important contribution to hospital infection J Hosp Infect 2007;65:50-54
- <sup>4</sup> Clinical Infectious Diseases, February 2008.
- <sup>5</sup> McBryde ES et al. J Hosp Infect 2004; 58:104



Oklahoma Foundation for Medical Quality  
IMPROVING HEALTH CARE *Improving Lives*

This material was prepared by Oklahoma Foundation for Medical Quality, the Medicare Quality Improvement Organization for Oklahoma, under contract with the Centers for Medicare & Medicaid Services (CMS), an agency of the U.S. Department of Health and Human Services. The contents presented do not necessarily reflect CMS policy. HAI-1128-OK-1010



IMPROVING QUALITY  
REDUCING INFECTION

## ♥ There are two ways to practice hand hygiene.

- Alcohol Gel or Foam
- Soap and Water

**NOTE:** Whenever a patient has *Clostridium difficile*, it is necessary to wash your hands with soap and water. Alcohol gel is ineffective against the *Clostridium difficile* spore.



## ♥ When should you wash your hands?

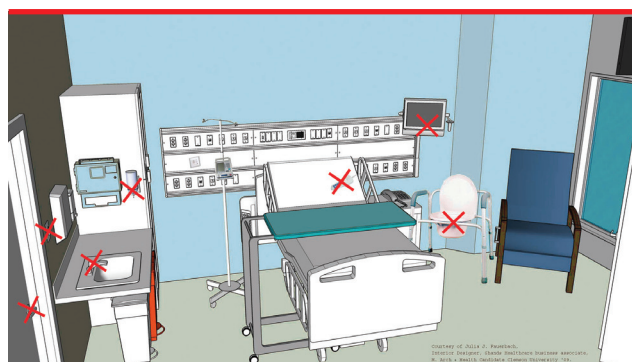
- Immediately before and after every patient contact,
- Before and after performing an invasive procedure, or manipulating an invasive device,
- After touching a contaminated surface,
- After removing gloves,
- After touching items or surfaces in the immediate patient care environment, even if you didn't touch the patient.<sup>1</sup>

## ♥ When do I wear gloves?

- When having contact with patients who are colonized or infected with pathogens transmitted by the contact route, e.g., CDiff, RSV, MRSA, VRE, or other MDRO.
- When handling or touching potentially contaminated patient care equipment or environmental surfaces.<sup>2</sup>

## ♥ How to wash hands

- Use soap and running water
- Make a foam
- Perform vigorous rubbing for at least 20 seconds
- Don't forget to include all digits, webbing in between fingers as well as all hand surfaces

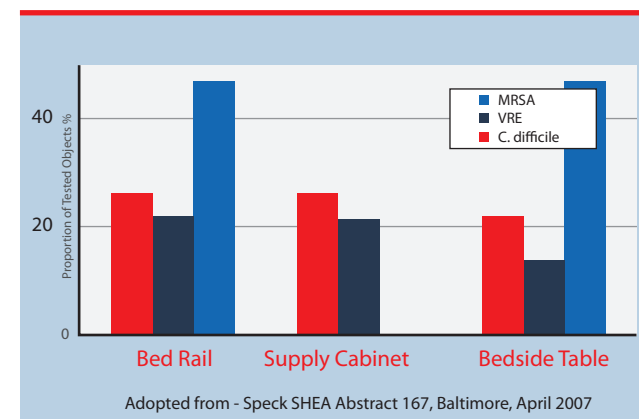


Typical sites of contamination. Are there any you might have overlooked?

## ♥ But I didn't touch the patient!

**42%** of nurses' gloves were contaminated after touching surfaces in a patient's room without ever touching the patient.<sup>3</sup>

## ♥ Bacteria Commonly Found in the Environment



## ♥ Reminders:

- Gel in, gel out - Always practice hand hygiene between patients
- Hand hygiene, and fresh gloves between tasks, even on same patient
- Work from clean to dirty when performing tasks in a patient's room
- The floor is 100% contaminated. If it falls on the floor, it is trash, unless it can be laundered

